

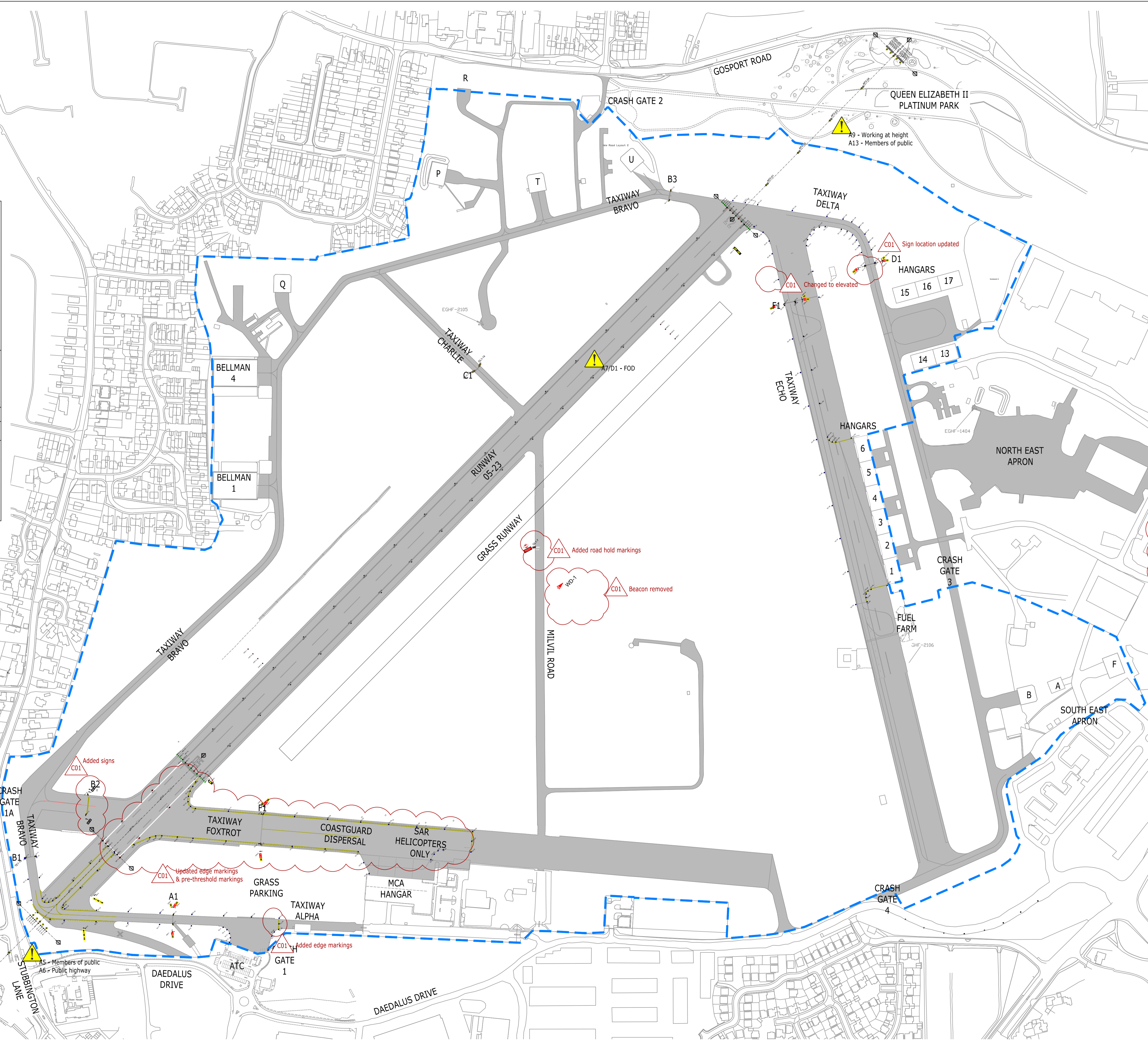
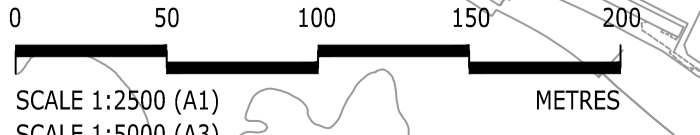
**Health and Safety Symbols Legend**

- Indicates a residual risk requiring a compulsory action
- Conveys information about a residual risk
- Indicates a residual risk requiring a specific action to be avoided
- Warns of a residual risk or information that is unusual and cannot be designed out
- Warns of a residual risk or information that is unusual and cannot be designed out

A5 - Members of public		
A6 - Public highway		
A7 - FOD		
A9 - Working at height		
A13 - Members of the public	D1 - FOD	

The table above is provided to assist the Principal Contractor to fulfil their obligations under the Construction Design & Management Regulations, 2015. It does not include residual risks that a competent Contractor will be aware of nor does it absolve the Principal Contractor of his legal responsibilities.  
For further hazard and risk information, refer to CDM Risk Register 1620014221-RAM-ZZ-00-HS-ZS-00001.

SAFETY HEALTH AND ENVIRONMENTAL INFORMATION BOX



- Notes
- Do not scale from this drawing.
  - All dimensions are in metres UNO.
  - All levels are in metres above ordnance datum UNO.
  - All shown luminaires are not to scale.
  - All AGL works to be coordinated with the civil works and programme. Temporary AGL installation to be installed as required and detailed in the AGL specification.
  - For AGL circuit details refer to drawings 1620014221-RAM-ZZ-00-DR-CX-07100 to 07106, 07200 to 07208 & 07300.
  - For AGL installation details in the AGL substation refer to drawings 1620014221-RAM-ZZ-00-DR-CX-07800 to 07808 & 07810.
  - For AGL installation details refer to drawings 1620014221-RAM-ZZ-00-DR-CX-08201 to 08213.
  - For AGL sections refer to drawings 1620014221-RAM-ZZ-00-DR-CX-07400 to 07407, 07410 & 07411.
  - For sign details refer to the sign schedule.
  - For CCR details refer to the CCR schedule.
  - Drawing to be read in combination with the AGL specification.
  - New ALCMS to be installed together with a safety case. For details refer to the AGL specification.
  - No excavations to be undertaken without conducting GPR scans.
  - No live working allowed on AGL installation. Lockout procedures to be agreed with Airport and PM.

- Key
- Runway edge elevated LED light (White/White)
  - Runway edge inset LED light (Red/Red)
  - Runway threshold inset LED light (Green)
  - Runway threshold/End inset LED light (Green/Red)
  - Runway wing bar elevated LED light (Green)
  - Runway end inset LED light (Red)
  - Runway edge elevated LED light (Blank/Red)
  - Runway approach inset LED light (White)
  - Runway approach elevated LED light (White)
  - Runway approach single pole
  - Runway approach triple mast
  - Runway guard light elevated LED light (Yellow/White)
  - Road holding elevated LED light (Red/Red)
  - Taxiway edge elevated LED light (Blue)
  - Taxiway edge inset LED light (Blue)
  - Wind directional indicator elevated LED light (White)
  - PAPI elevated LED light (White/Red)
  - Mandatory LED sign
  - Information LED sign
  - Section Location (see note 8)
  - Airport boundary
  - Existing non-illuminated sign to be relocated
  - Beacon removed

C01	FOR CONSTRUCTION	12/09/2023	CAS	MDS
T02	FOR TENDER	16/03/2023	CAS	MDS
T01	FOR TENDER	03/03/2023	CAS	MDS
Rev	Description	Date	By	App

**FOR CONSTRUCTION**

**SOLENT AIRPORT AGL**

Client:  
**Fareham Borough Council**  
 Civic Offices,  
 Civic Way,  
 Hampshire, PO16 7AZ  
 Tel: +44 (0) 1329 236100



**AGL PROPOSED LAYOUT OVERVIEW**

Scale @ A1:	Date:	Drawn:	Checked:
1:500	28/02/23	CAS	HE
Drawing No.:	Rev:		
1620014221-RAM-ZZ-00-DR-CX-07020	C01		